

Genting Dream ~ 4 Nights Monday Cruise
40% Off | Standrad Promotion | Suite Promotion



Sailing: 12 Aug 2019

Version : 20 Jun 2019

FREE BUS TRANSFER FOR 1ST & 2ND PAX OR FREE LUGGAGE BAG (PER CABIN)

Fares are per person, cruise-only, based on double occupancy quoted in **Malaysia Ringgit 马币**

4Nights (Mon) Singapore - Ko Samui - Redang - Singapore 4晚 (星期一) 新加坡-苏梅岛-热浪岛-新加坡		Low Season Aug 12, 2019	Low Season Aug 12, 2019
Sailing Date:		12-Aug-19	
Promotion:		40% OFF	SUMMER NEW SUITES PROMOTION STANDRAD PROMOTION
Booking Period Until:		12 Aug 19	12 Aug 19
Price Program:		GDALLSUM19_D40	GDALLSUMSUITE 15 (DPS~DPV) GDALLSUM19_STD (ISS~BDS)
Cabin Descriptions		Max Occupancy	
			LOW
			1st / 2nd
DPV	Palace Villa 皇宫庭院别墅	6	NIL 16,780
DPP	Palace Penthouse 皇宫行政套房	6	NIL 13,532
DDS	Palace Deluxe Suite 皇宫豪华套房	4	NIL 8,544
DSA DPS	Palace Suite 皇宫套房	4	NIL 5,143
BDA BDS	Balcony Deluxe 豪华露台客房	4	2,593 3,025
BSA BSS	Balcony 露台客房	4	2,371 2,766
OSA OSS	Oceanview 海景客房	4	2,132 2,488
ISA ISS	Interior 内侧客房	4	1,672 1,950
The 3rd/ 4th passenger in the same cabin 同客舱内的第3或4乘客		50% of promotional rate of 1st Pax	
The 5th/ 6th passenger in the same cabin 同客舱内的第5或6乘客		50% of promotional rate of 1st Pax (valid for Palace Villa Penthouse 限于皇宫庭院别墅/行政套房)	
Single Fare / 单人价格		150% of Promotional rate of 1st Pax	
Infant (6-24 month) / 婴儿价格 (6-24月)		25% of 1st pax fare upon 2 paying pax	
Cruise Port Charges 港口费 (Subject to Change)		RM 199	
Gratuities Fee/Per person per night 船上小费/每人每晚		SGD 26 for Suite and above (Per person per night 每人每晚) SGD 21 for Balcony Deluxe Stateroom or below (Per person per night 每人每晚) No gratuities charges for children below 2-years-old	
Return Kuala Lumpur / Singapore Check in Port Transfer 来回吉隆坡/新加坡登船码头接送		RM 160 (Van / Bus Persiaran Depends on group size 交通工具安排取决于人数而定)	

Genting Dream ~ 4 Nights Monday Cruise ~ Itinerary



The Palace Privileges ~ As guests of The Palace (DPV ~ DPS), you are entitled to exclusive privileges throughout the cruise:

"The Palace 皇宫"非凡礼遇 ~ 作为"The Palace 皇宫"的贵宾 (DPV ~ DPS), 您可以享用邮轮的尊崇礼遇

On your arrival 您的专属通道:

- Access to VIP lounge at the terminal 享用设于码头内的VIP贵宾休息专区
- Priority check-in with butler assistance 提供管家协助优先办理登船手续
- Fast-track security clearance 享用特快安检通道
- Priority luggage check-in and check-out with express delivery
- 优先寄存行李、享用行李快递到房及办理离船手续

When you dine 您的味蕾盛宴:

- Exclusive access to The Palace Restaurant with complimentary premium dining 于皇宫餐厅免费享用高级美食
- Set meals at specialty restaurants 于特色餐厅品尝精美套餐
- Meal options at Crystal Life (TM) Cuisine 于水晶生活享用佳肴美点
- Premium beverage package for all bars, lounges, and restaurants
- 于船上所有酒吧、酒廊及餐厅享用高级酒水畅饮套餐
- Priority booking for Table and Vintage Room 优先预订"主厨餐桌"及星宴
- Exclusive dining events 专享盛宴派对
- Complimentary in-suite dining 于套房内享受免费送餐服务

In your Suite 您的尊贵套住宿:

- 24-hour butler concierge 24小时管家礼宾服务
- Standard Wifi package throughout cruise 全程免费无线上网服务 (标准套餐)
- Fine Italian bed linen, duvet, towels, and bathrobes from Frette™
- 意大利品牌Frette (TM)的高级床单、被褥、毛巾及浴袍
- Nespresso (TM) machine with gourmet coffee and tea Nespresso (TM) 咖啡机, 精品咖啡及茶饮
- Welcome treats 迎宾饮品及小食
- Pressing service 免费熨衣服务

When you explore 您的启迪体验:

- Priority access to shows and movies 优先预订大型表演及电影门票
- Dedicated Palace Kids program 专为"The Palace 皇宫"儿童旅客而设的活动
- Bespoke enrichment program, "The Connoisseurs Circle" 量身定制的"鉴赏家系列"增益活动
- Choice of select Palace or general shore excursions per port
- 于每个港口免费参加"The Palace 皇宫"精选岸上观光团或常规岸上观光团
- City shuttle transfers 免费市内接驳交通 (指定港口)

4 Nights Singapore - Cruising Day - Ko Samui - Pulau Redang - Singapore

Day	Port	Arrive(Local)	Depart(Local)
Monday	Singapore	-	2359
Tuesday	Cruising Day	-	-
Wednesday	Ko Samui	0800 (0700)	1700 (1600)
Thursday	Pulau Redang	0900	2000
Friday	Singapore	1300	-

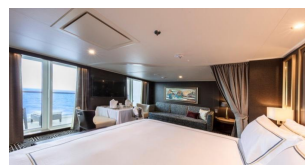
() Local Time **Last Boarding time 2230**



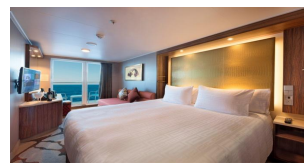
Palace Villa
皇宫庭苑别墅



Palace Penthouse
皇宫行政套房



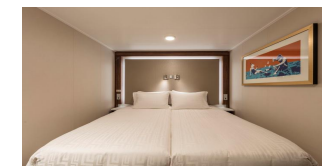
Palace Suite
皇宫套房



Balcony
露台客房



Oceanview
海景客房



Interior
内侧客房

TERMS & CONDITIONS

1. Deposit 50% of cruise fee, full payment one month before departure. 100 % Deposit for Peak Season.
2. Infants below 6 months at the time of sailing are not allowed to cruise;
A passenger under 18 years of age must be accompanied in the same cabin by a passenger 18 years or older.
3. Passage for a pregnant woman will only be permitted before her 24th week of pregnancy at the time of sailing.
4. Cruise Check in time will commence 4 hours before ship's departure; Gate closes one hour before departure.
5. Dream Cruises reserves the right to cancel and/ or substitute any information or any scheduled port of call/ itinerary/ price/ program at any time for any reason whatsoever without notice.

1) Return Bus Transfer KUL - SIN - KUL

Sailing : All sailings
Detail : 1st & 2nd guests only
T&C : Non- Combinable with Free Luggage Bag

2) Free Luggage Bag

Sailing : All Sailings
Detail : Interior - 20 Inch (Per Cabin) | Oceanview and above - 24 Inch (Per Cabin)
T&C : Non-Combinable with Return Bus Transfer

Genting Dream ~ 4 Nights Monday/ Sunday Cruise

2nd Pax RM 0 | Early Bird Kid/ 3rd & 4th Cruise Free | 40% Off | Suite Room Promomotion

Fares are per person, cruise-only, based on double occupancy quoted in [Malaysia Ringgit 马币](#)

Version : 07 Jun 2019

FREE BUS TRANSFER FOR 1ST & 2ND PAX OR FREE LUGGAGE BAG (PER CABIN)

4Nights (Mon/ Sun) Singapore - Melaka - Phuket - Singapore 4晚 (星期一/日) 新加坡-马六甲-普吉岛-新加坡		Low Season Jan 12*, 2020	Low Season Jan 12*, 27, 2020	Low Season Jan 12*, 27, 2020	Low Season Jan 12*, 27, 2020	Low Season Jan 12*, 27, 2020	
Sailing Date:		12 Jan 2020 - 27 Jan 2020					
Promotion:		10% OFF + 2ND PAX RM 0	2ND PAX RM 0	EARLY-BIRD KIDS / 3RD & 4TH PAX	WEEKDAYS 40% OFF	SUITE ROOM PROMOTION (15% OFF)	
Booking Period Until:		31 Jul 2019	31 Jul 19	31 Jul 19	03 Apr 20	03 Apr 2020	
Price Program:		GDALLW19B1G1A10	GDALLWIN19B1G1	GDALLW19KD34FOC	GDALLW19WKDYD40	GDALLWINSUITE15	
Cabin Descriptions		Low		Low		Low	
Max Occupancy		1st	2nd	1st	2nd	1st / 2nd	1st / 2nd
DPV	Palace Villa 皇宮庭苑別墅	6	NIL	NIL	NIL	NIL	16,794
DPP	Palace Penthouse 皇宮行政套房	6	NIL	NIL	NIL	NIL	13,532
DDS	Palace Deluxe Suite 皇宮豪華套房	4	NIL	NIL	NIL	NIL	7,709
DSA DPS	Palace Suite 皇宮套房	4	NIL	NIL	NIL	NIL	5,679
BDA BDS	Balcony Deluxe 豪華露台客房	4	3,889	0	4321	0	2593
BSA BSS	Balcony 露台客房	4	3,557	0	3952	0	2371
OSA OSS	Oceanview 海景客房	4	3,199	0	3554	0	2132
ISA ISS	Interior 內側客房	4	2,507	0	2786	0	1672
The 3rd/ 4th passenger in the same cabin 同客艙內的第3或4乘客		50% of promotional rate of 1st Pax		50% of promotional rate of 1st Pax		FREE	50% of promotional rate of 1st Pax
Single Fare / 单人价格		Not Applicable		Not Applicable		Not Applicable	150% of Promotional rate of 1st Pax
Infant (6-24 month) / 嬰兒价格 (6-24月)		25% of 1st pax fare upon 2 paying pax		Not Applicable		Not Applicable	25% of 1st pax fare upon 2 paying pax
Cruise Port Charges 港口费 (Subject to Change)		RM 199					
Gratuities Fee/Per person per night 船上小费/每人每晚		SGD 26 for Suite and above (Per person per night 每人每晚) SGD 21 for Balcony Deluxe Stateroom or below (Per person per night 每人每晚) No gratuities charges for children below 2-years-old					
Return Kuala Lumpur/ Singapore Check in Port Transfer 来回吉隆坡/新加坡登船码头接送		RM 160 (Van / Bus Persiaran Depends on group size 交通工具安排取决于人数而定)					

Genting Dream ~ 4 Nights Monday Cruise ~ Itinerary

The Palace Privileges ~ As guests of The Palace (DPV ~ DPS), you are entitled to exclusive privileges throughout the cruise:
"The Palace 皇宫"非凡礼遇 ~ 作为"The Palace 皇宫"的贵宾 (DPV ~ DPS), 您可以享用邮轮的尊崇礼遇

On your arrival 您的专属通道:

- Access to VIP lounge at the terminal 享用设于码头内的VIP贵宾休息专区
- Priority check-in with butler assistance 提供管家协助优先办理登船手续
- Fast-track security clearance 享用特快安检通道
- Priority luggage check-in and check-out with express delivery
- 优先寄存行李、享用行李快递到房及办理离船手续

When you dine 您的味蕾盛宴:

- Exclusive access to The Palace Restaurant with complimentary premium dining 于皇宫餐厅免费享用高级美食
- Set meals at specialty restaurants 于特色餐厅品尝精美套餐
- Meal options at Crystal Life (TM) Cuisine 于水晶生活享用佳肴美点
- Premium beverage package for all bars, lounges, and restaurants
- 于船上所有酒吧、酒廊及餐厅享用高级酒水畅饮套餐
- Priority booking for Table and Vintage Room 优先预订"主厨餐桌"及星宴
- Exclusive dining events 专享盛宴派对
- Complimentary in-suite dining 于套房内享受免费送餐服务

In your Suite 您的尊贵套住宿:

- 24-hour butler concierge 24小时管家礼宾服务
- Standard Wifi package throughout cruise 全程免费无线上网服务 (标准套餐)
- Fine Italian bed linen, duvet, towels, and bathrobes from Frette™
- 意大利品牌Frette (TM)的高级床单、被褥、毛巾及浴袍
- Nespresso (TM) machine with gourmet coffee and tea Nespresso (TM) 咖啡机, 精品咖啡及茶饮
- Welcome treats 迎宾饮品及小食
- Pressing service 免费熨衣服务

When you explore 您的启迪体验:

- Priority access to shows and movies 优先预订大型表演及电影门票
- Dedicated Palace Kids program 专为"The Palace 皇宫"儿童旅客而设的活动
- Bespoke enrichment program, "The Connoisseurs Circle" 量身定制的"鉴赏家系列"增益活动
- Choice of select Palace or general shore excursions per port
- 于每个港口免费参加"The Palace 皇宫"精选岸上观光团或常规岸上观光团
- City shuttle transfers 免费市内接驳交通 (指定港口)

4 Nights Singapore - Melaka - Phuket - Singapore			
Day	Port	Arrive(Local)	Depart(Local)
Monday 27 Jan	Singapore	-	2100
Tuesday 28 Jan	Melaka	0900	1800
Wednesday 29 Jan	Phuket (Patong Bay)	1500 (1400)	-
Thursday 30 Jan	Phuket (Patong Bay)	-	1200 (1100)
Friday 31 Jan	Singapore	1500	-
() Local Time		Last Boarding time 1930	

4 Nights Singapore - Melaka - Phuket - Singapore			
Day	Port	Arrive(Local)	Depart(Local)
Sunday 12 Jan	Singapore	-	1700
Monday 13 Jan	Melaka	0900	1800
Tuesday 14 Jan	Phuket (Patong Bay)	1500 (1400)	-
Wednesday 15 Jan	Phuket (Patong Bay)	-	1200 (1100)
Thursday 16 Jan	Singapore	1830	-
() Local Time		Last Boarding time 1530	



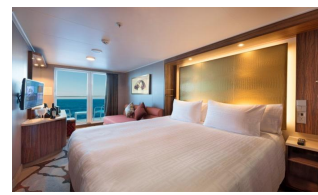
Palace Villa
 皇宫庭苑别墅



Palace Penthouse
 皇宫行政套房



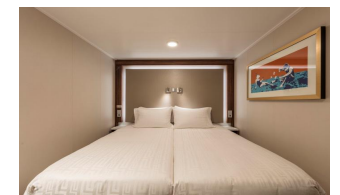
Palace Suite
 皇宫套房



Balcony
 露台客房



Oceanview
 海景客房



Interior
 内侧客房

TERMS & CONDITIONS

1. Deposit 50% of cruise fee, full payment one month before departure. 100 % Deposit for Peak Season.
2. Infants below 6 months at the time of sailing are not allowed to cruise;
 A passenger under 18 years of age must be accompanied in the same cabin by a passenger 18 years or older.
3. Passage for a pregnant woman will only be permitted before her 24th week of pregnancy at the time of sailing.
4. Cruise Check in time will commence 4 hours before ship's departure; Gate closes one hour before departure.
5. Dream Cruises reserves the right to cancel and/ or substitute any information or any scheduled port of call/ itinerary/ price/ program at any time for any reason whatsoever without notice.

1) Return Bus Transfer KUL - SIN - KUL

Sailing : All sailings
 Detail : 1st & 2nd guests only
 T&C : Non- Combinable with Free Luggage Bag

2) Free Luggage Bag

Sailing : All Sailings
 Detail : Interior - 20 Inch (Per Cabin) | Oceanview and above - 24 Inch (Per Cabin)
 T&C : Non-Combinable with Return Bus Transfer